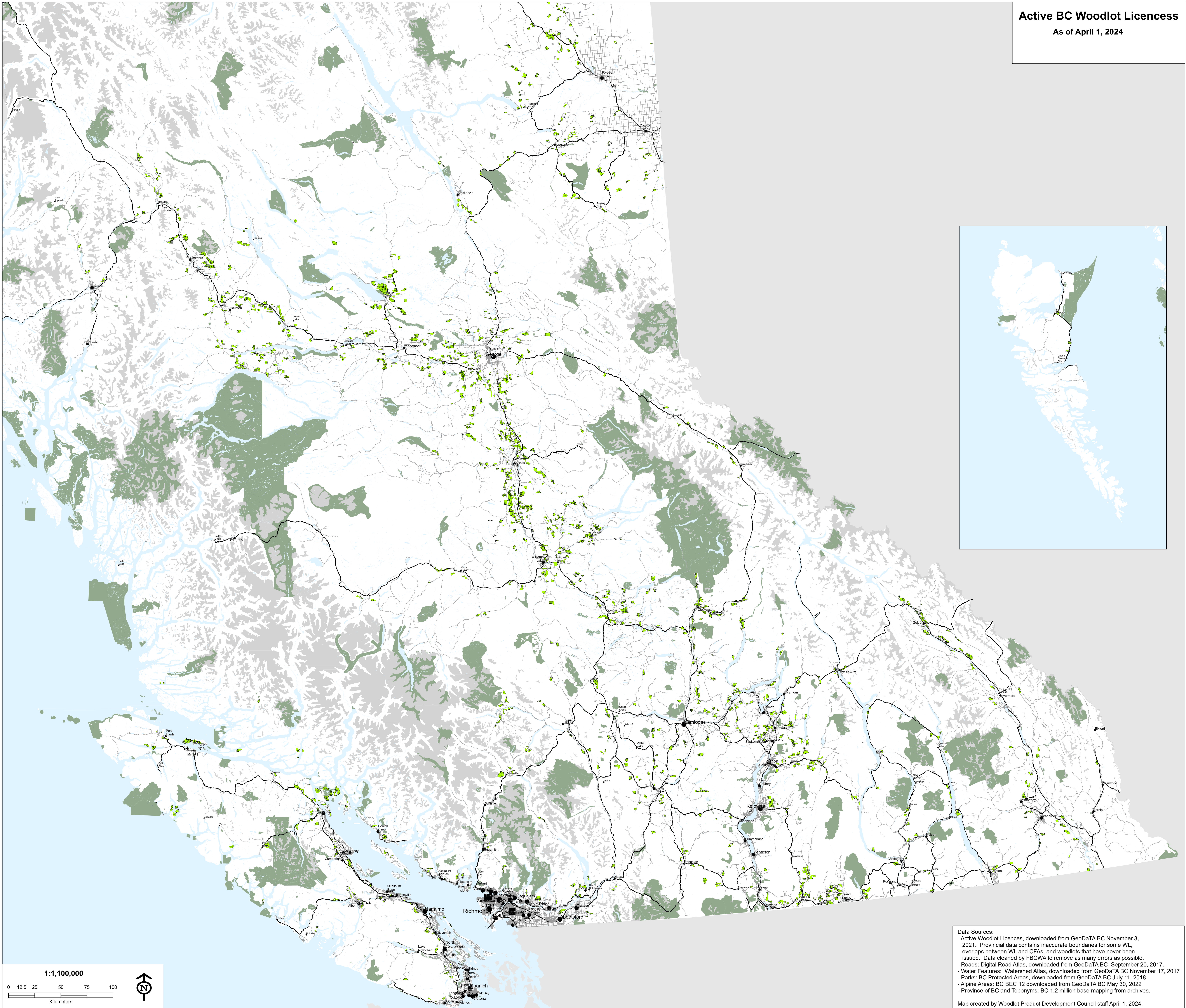


# Active BC Woodlot Licences

As of April 1, 2024



**Data Sources:**  
- Active Woodlot Licences, downloaded from GeoDaTA BC November 3, 2021. Provincial data contains inaccurate boundaries for some WL, overlaps between WL and CFAs, and woodlots that have never been issued. Data cleaned by FBCWA to remove as many errors as possible.  
- Roads: Digital Road Atlas, downloaded from GeoDaTA BC September 20, 2017.  
- Water Features: Watershed Atlas, downloaded from GeoDaTA BC November 17, 2017.  
- Parks: BC Protected Areas, downloaded from GeoDaTA BC July 11, 2018.  
- Alpine Areas: BC BEC 12 downloaded from GeoDaTA BC May 30, 2022  
- Province of BC and Toponyms: BC 1:2 million base mapping from archives.

Map created by Woodlot Product Development Council staff April 1, 2024.

