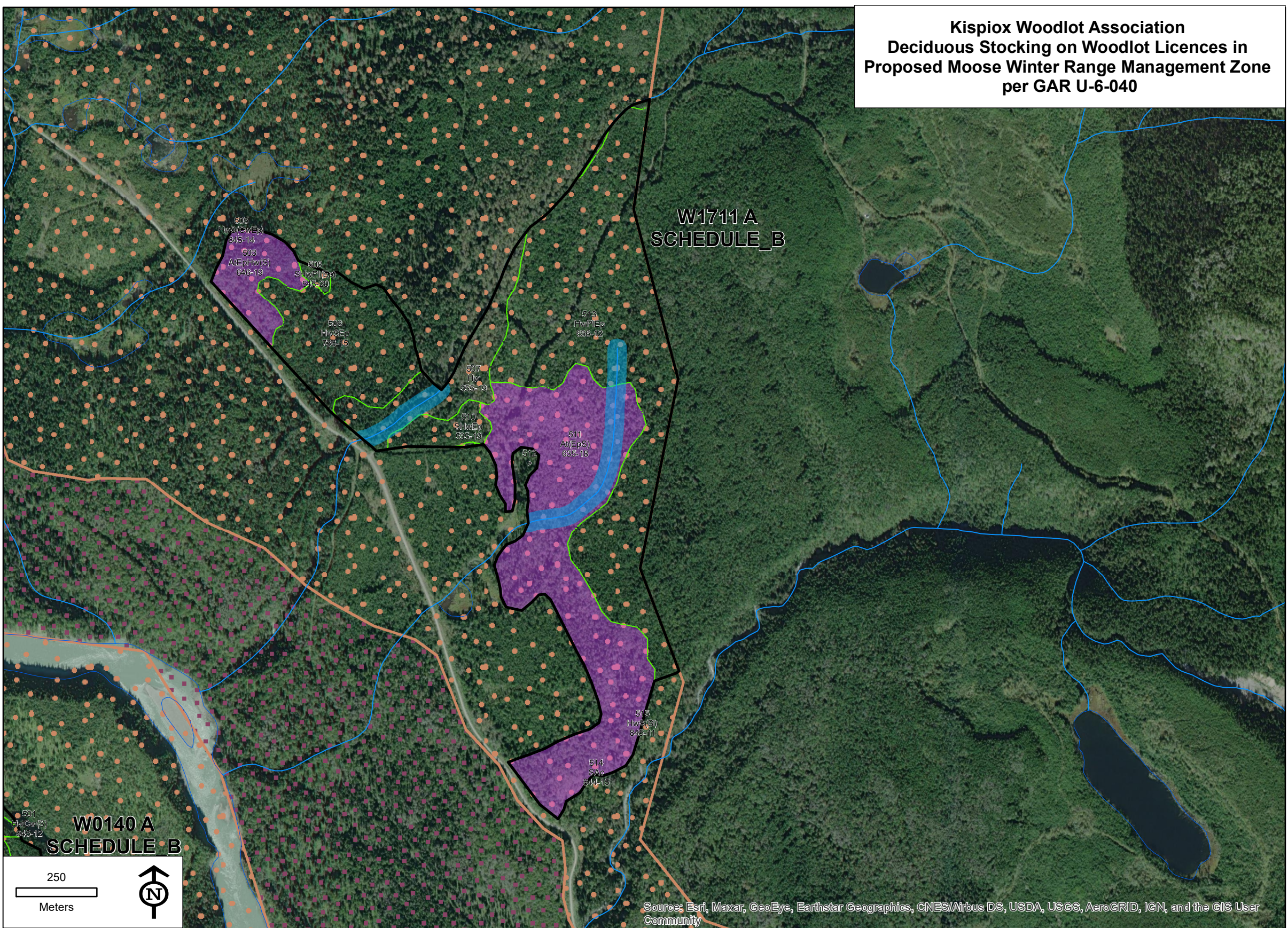
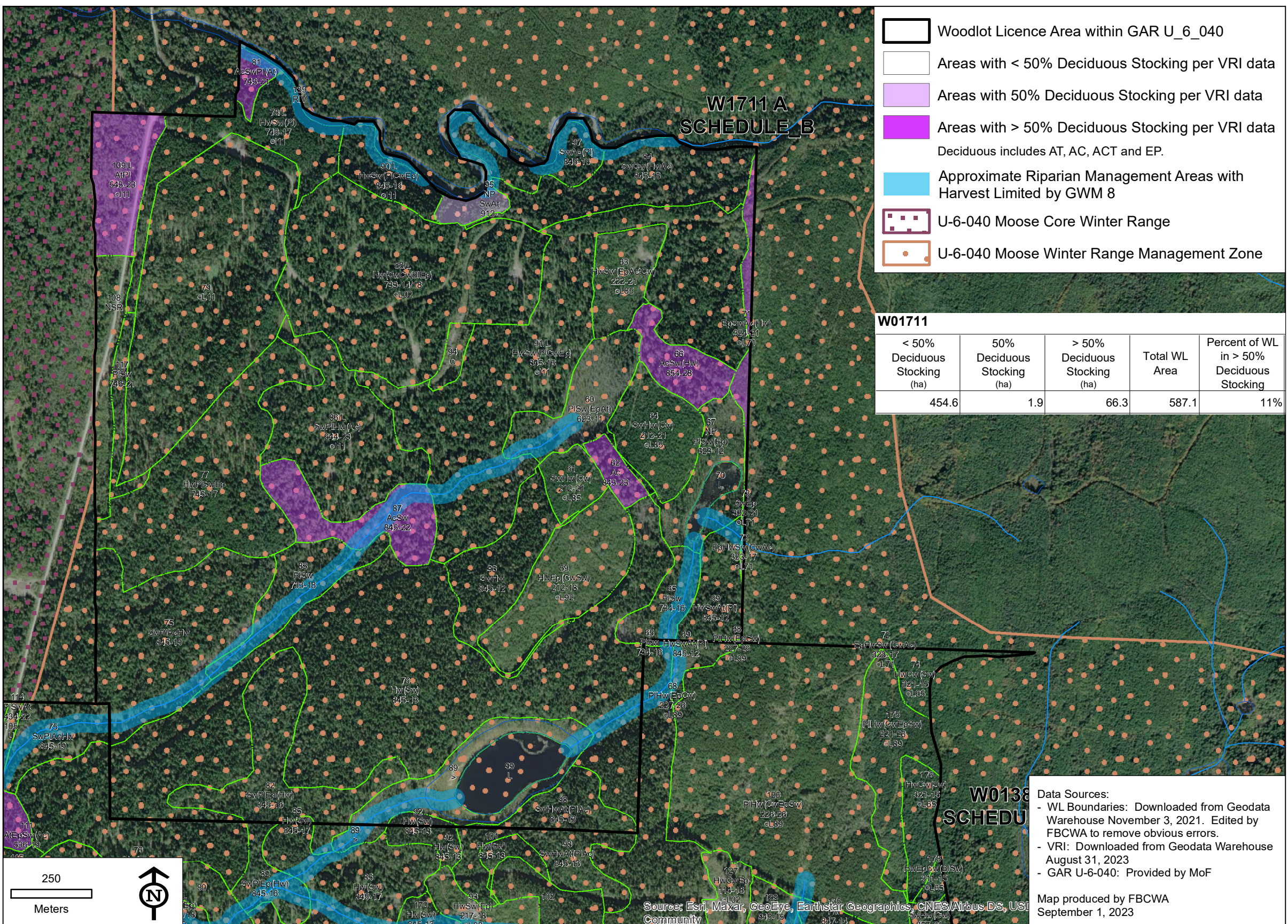


**Kispiox Woodlot Association
Deciduous Stocking on Woodlot Licences in
Proposed Moose Winter Range Management Zone
per GAR U-6-040**



Source: Esri, Maxar, GeoEye, Earthstar Geographics, CNES/Airbus DS, USDA, USGS, AeroGRID, IGN, and the GIS User Community



- Woodlot Licence Area within GAR U_6_040
- Areas with < 50% Deciduous Stocking per VRI data
- Areas with 50% Deciduous Stocking per VRI data
- Areas with > 50% Deciduous Stocking per VRI data
Deciduous includes AT, AC, ACT and EP.
- Approximate Riparian Management Areas with Harvest Limited by GWM 8
- U-6-040 Moose Core Winter Range
- U-6-040 Moose Winter Range Management Zone

W01711				
< 50% Deciduous Stocking (ha)	50% Deciduous Stocking (ha)	> 50% Deciduous Stocking (ha)	Total WL Area	Percent of WL in > 50% Deciduous Stocking
454.6	1.9	66.3	587.1	11%

Data Sources:
 - WL Boundaries: Downloaded from Geodata Warehouse November 3, 2021. Edited by FBCWA to remove obvious errors.
 - VRI: Downloaded from Geodata Warehouse August 31, 2023
 - GAR U-6-040: Provided by MoF

Map produced by FBCWA
September 1, 2023