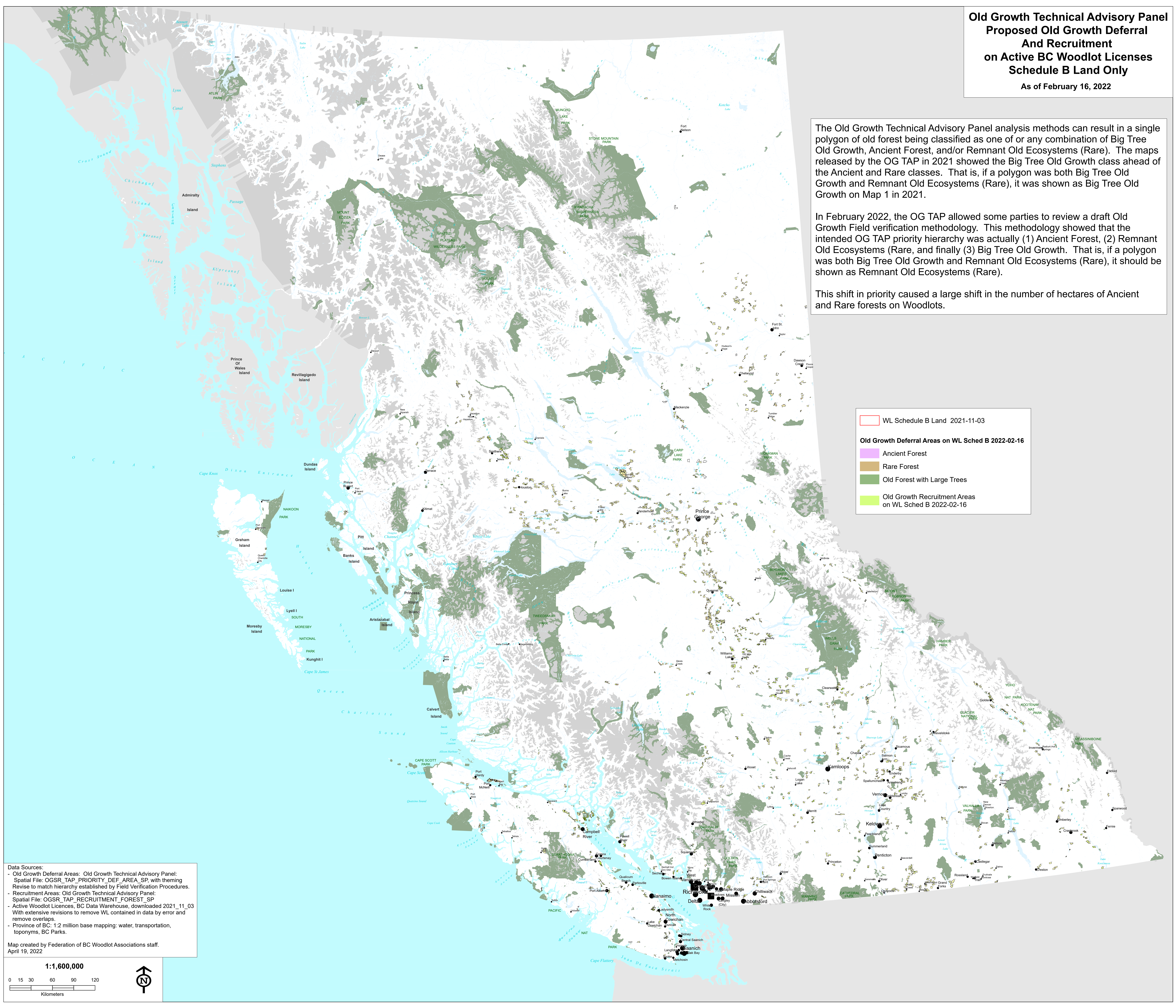


**Old Growth Technical Advisory Panel
Proposed Old Growth Deferral
And Recruitment
on Active BC Woodlot Licenses
Schedule B Land Only
As of February 16, 2022**

The Old Growth Technical Advisory Panel analysis methods can result in a single polygon of old forest being classified as one of or any combination of Big Tree Old Growth, Ancient Forest, and/or Remnant Old Ecosystems (Rare). The maps released by the OG TAP in 2021 showed the Big Tree Old Growth class ahead of the Ancient and Rare classes. That is, if a polygon was both Big Tree Old Growth and Remnant Old Ecosystems (Rare), it was shown as Big Tree Old Growth on Map 1 in 2021.

In February 2022, the OG TAP allowed some parties to review a draft Old Growth Field verification methodology. This methodology showed that the intended OG TAP priority hierarchy was actually (1) Ancient Forest, (2) Remnant Old Ecosystems (Rare, and finally (3) Big Tree Old Growth. That is, if a polygon was both Big Tree Old Growth and Remnant Old Ecosystems (Rare), it should be shown as Remnant Old Ecosystems (Rare).

This shift in priority caused a large shift in the number of hectares of Ancient and Rare forests on Woodlots.



WL Schedule B Land 2021-11-03

Old Growth Deferral Areas on WL Sched B 2022-02-16

- Ancient Forest
- Rare Forest
- Old Forest with Large Trees
- Old Growth Recruitment Areas on WL Sched B 2022-02-16

Data Sources:
 - Old Growth Deferral Areas: Old Growth Technical Advisory Panel: Spatial File: OGSR_TAP_PRIORITY_DEF_AREA_SP, with theming Revise to match hierarchy established by Field Verification Procedures.
 - Recruitment Areas: Old Growth Technical Advisory Panel: Spatial File: OGSR_TAP_RECRUITMENT_FOREST_SP
 - Active Woodlot Licences, BC Data Warehouse, downloaded 2021_11_03 With extensive revisions to remove WL contained in data by error and remove overlaps.
 - Province of BC: 1:2 million base mapping: water, transportation, toponyms, BC Parks.

Map created by Federation of BC Woodlot Associations staff.
 April 19, 2022

