

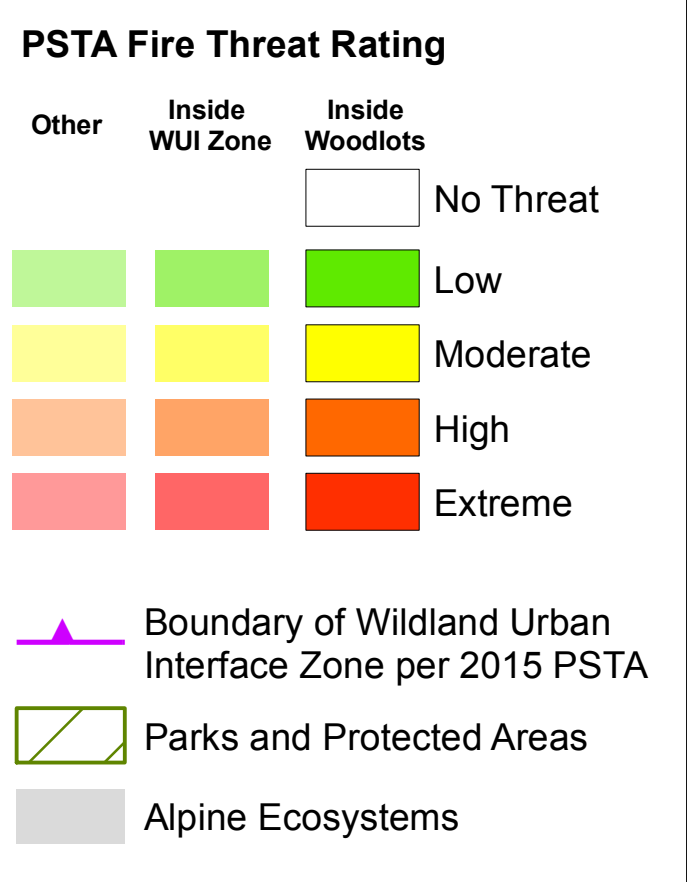
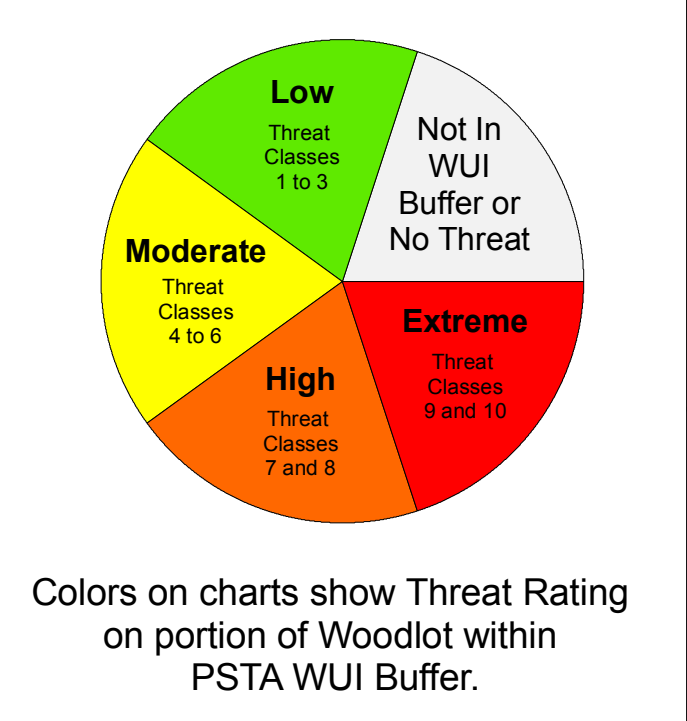
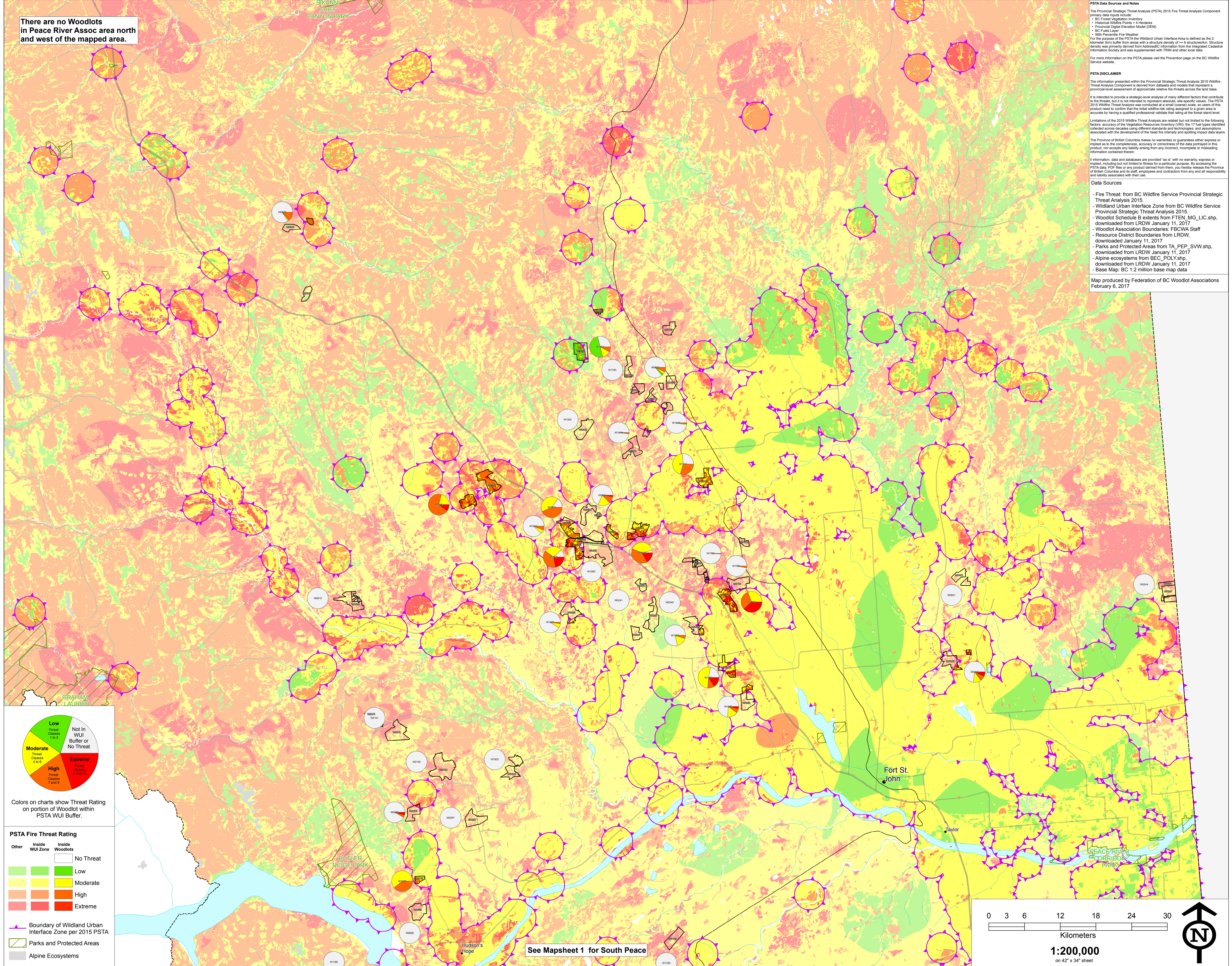
There are no Woodlots in Peace River Assoc area north and west of the mapped area.

PSTA Data Sources and Notes
 The Provincial Strategic Threat Analysis (PSTA) 2015 Fire Threat Analysis Component primary data inputs include:
 - BC Forest Vegetation Inventory
 - Historical Wildfire Points - 4 Hectares
 - Provincial Digital Elevation Model (DEM)
 - BC Fuels Layer
 - 50m Perennial Fire Weather
 For the purpose of the PSTA the Wildland Urban Interface Area is defined as the 2 kilometre (km) buffer from areas with a structure density of ≥ 0 structures/km². Structure density was primarily derived from AddressBC information from the Integrated Cadastral Information Society and was supplemented with TRM and other local data.
 For more information on the PSTA please visit the Prevention page on the BC Wildfire Service website.

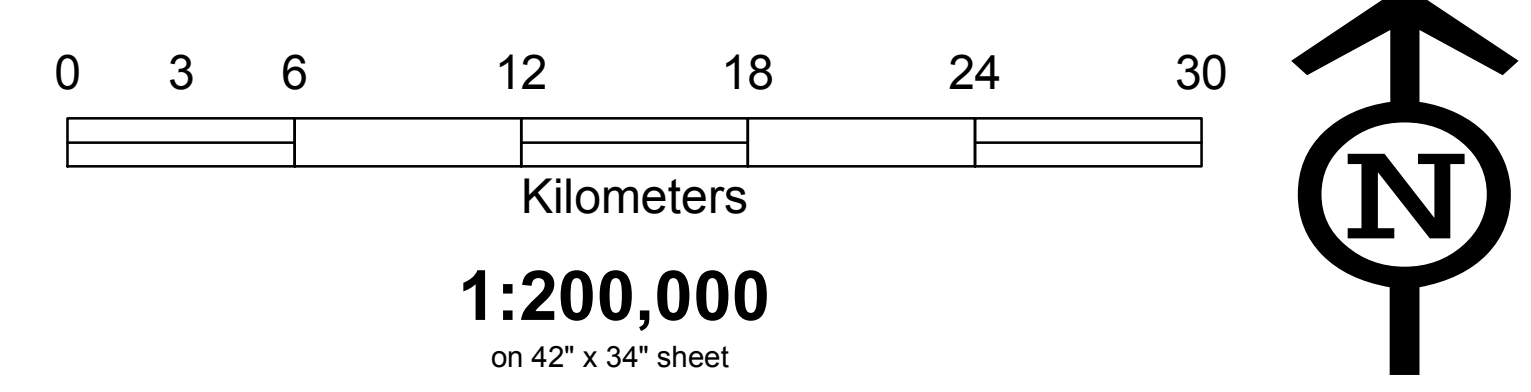
PSTA DISCLAIMER
 The information presented within the Provincial Strategic Threat Analysis 2015 Wildfire Threat Analysis Component is derived from datasets and models that represent a provincial-level assessment of approximate relative fire threats across the land base. It is intended to provide a strategic-level analysis of many different factors that contribute to fire threats, but it is not intended to represent absolute, site-specific values. The PSTA 2015 Wildfire Threat Analysis was conducted at a small (coarse) scale, so users of this product need to confirm that the initial wildfire risk rating assigned to a given area is accurate by having a qualified professional validate that rating at the forest stand level.
 Limitations of the 2015 Wildfire Threat Analysis are related but not limited to the following factors: accuracy of the Vegetation Resource Inventory (VRI); the 17 fuel types identified collected across decades using different standards and technologies; and assumptions associated with the development of the head fire intensity and spotting impact data layers.
 The Province of British Columbia makes no warranties or guarantees either express or implied as to the completeness, accuracy or consistency of the data portrayed in this product, nor accepts any liability arising from any incorrect, incomplete or misleading information contained therein.
 All information, data and databases are provided "as is" with no warranty, express or implied, including but not limited to fitness for a particular purpose. By accessing the PSTA data, PDF files or any product derived from them, you hereby release the Province of British Columbia and its staff, employees and contractors from any and all responsibility and liability associated with their use.

Data Sources
 - Fire Threat: from BC Wildfire Service Provincial Strategic Threat Analysis 2015.
 - Wildland Urban Interface Zone from BC Wildfire Service Provincial Strategic Threat Analysis 2015.
 - Woodlot Schedule B extents from FTEN_MG_LIC.shp, downloaded from LRDW January 11, 2017.
 - Woodlot Association Boundaries: FBCWA Staff
 - Resource District Boundaries from LRDW, downloaded January 11, 2017.
 - Parks and Protected Areas from TA_PEP_SVW.shp, downloaded from LRDW January 11, 2017.
 - Alpine ecosystems from BEC_POLY.shp, downloaded from LRDW January 11, 2017.
 - Base Map: BC 1:2 million base map data

Map produced by Federation of BC Woodlot Associations
 February 6, 2017



See Mapsheet 1 for South Peace



**Peace River Woodlot Association - Mapsheet 2 of 2 - North
 PSTA Fire Threat Rating on Crown Land within Woodlot Licences within WUI Buffers**