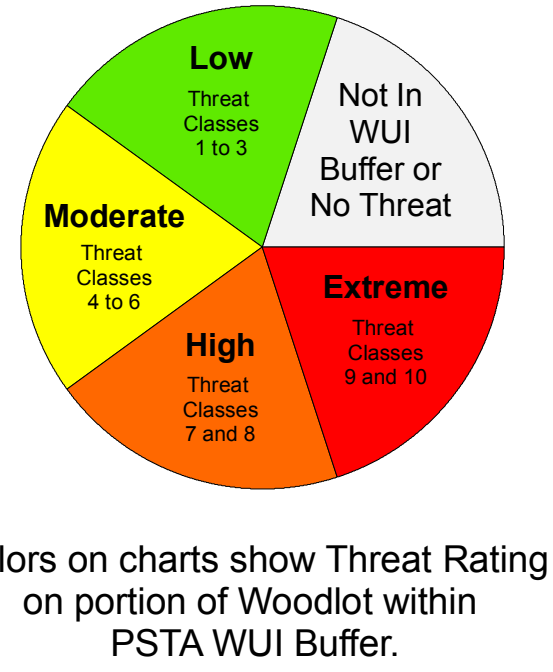
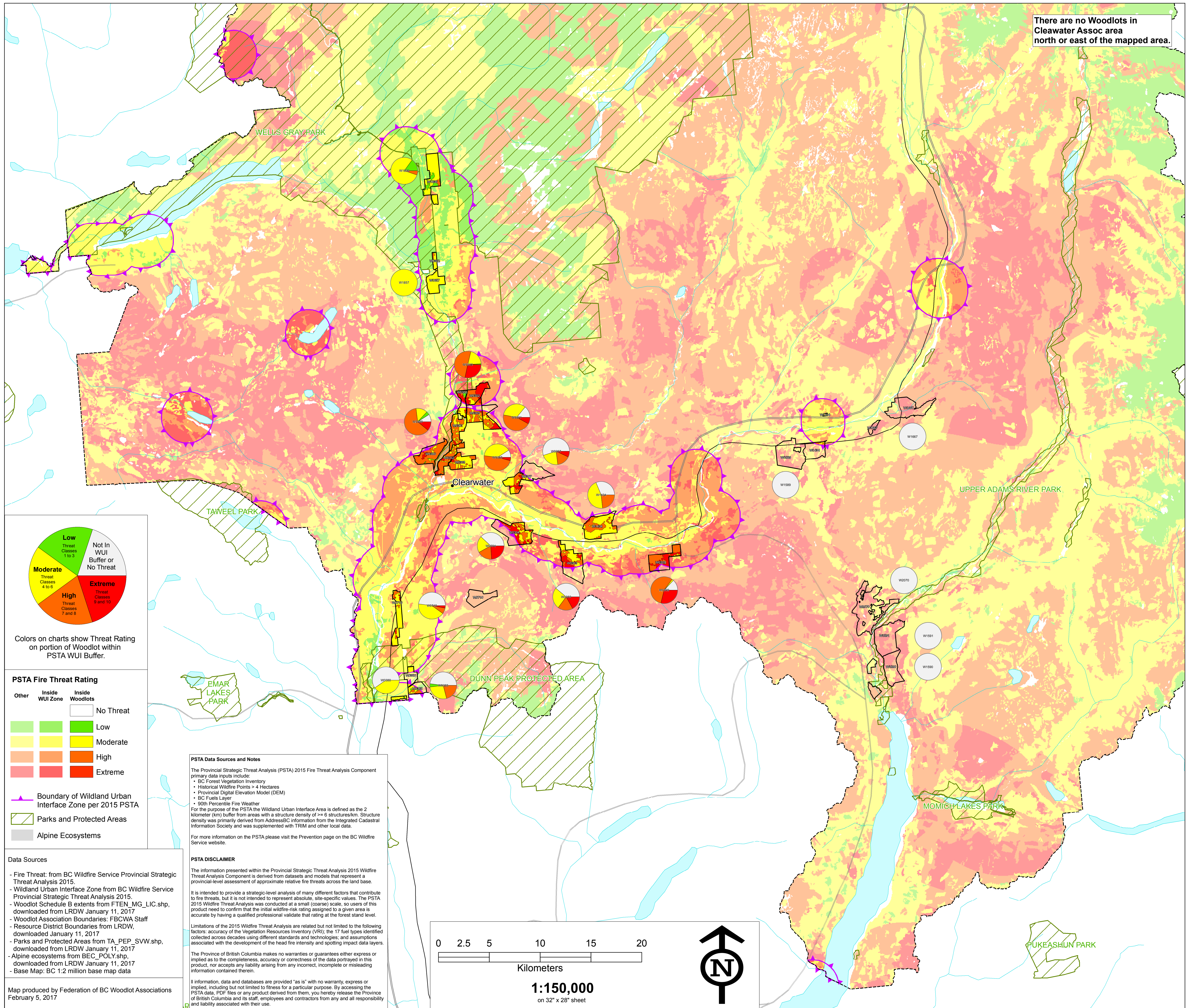


There are no Woodlots in Clearwater Assoc area north or east of the mapped area.



**PSTA Fire Threat Rating**

Other	Inside WUI Zone	Inside Woodlots
		No Threat
		Low
		Moderate
		High
		Extreme

- Boundary of Wildland Urban Interface Zone per 2015 PSTA
- Parks and Protected Areas
- Alpine Ecosystems

- Data Sources**
- Fire Threat: from BC Wildfire Service Provincial Strategic Threat Analysis 2015.
  - Wildland Urban Interface Zone from BC Wildfire Service Provincial Strategic Threat Analysis 2015.
  - Woodlot Schedule B extents from FTEN\_MG\_LIC.shp, downloaded from LRDW January 11, 2017
  - Woodlot Association Boundaries: FBCWA Staff
  - Resource District Boundaries from LRDW, downloaded January 11, 2017
  - Parks and Protected Areas from TA\_PEP\_SVW.shp, downloaded from LRDW January 11, 2017
  - Alpine ecosystems from BEC\_POLY.shp, downloaded from LRDW January 11, 2017
  - Base Map: BC 1:2 million base map data

**PSTA Data Sources and Notes**

The Provincial Strategic Threat Analysis (PSTA) 2015 Fire Threat Analysis Component primary data inputs include:

- BC Forest Vegetation Inventory
- Historical Wildfire Points > 4 Hectares
- Provincial Digital Elevation Model (DEM)
- BC Fuels Layer
- 90th Percentile Fire Weather

For the purpose of the PSTA the Wildland Urban Interface Area is defined as the 2 kilometer (km) buffer from areas with a structure density of  $\geq 6$  structures/km. Structure density was primarily derived from AddressBC information from the Integrated Cadastral Information Society and was supplemented with TRIM and other local data.

For more information on the PSTA please visit the Prevention page on the BC Wildfire Service website.

**PSTA DISCLAIMER**

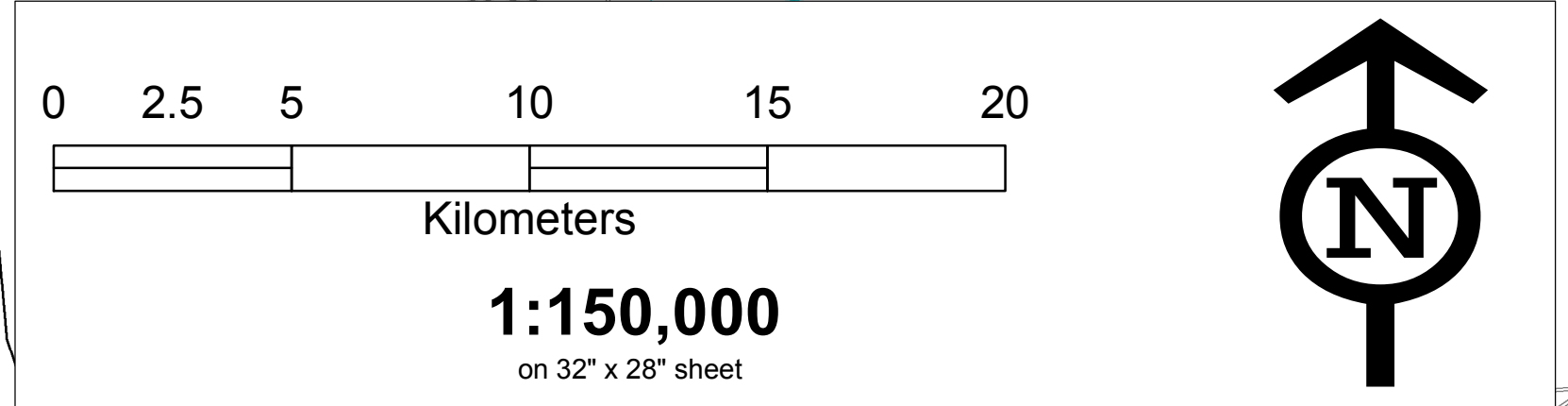
The information presented within the Provincial Strategic Threat Analysis 2015 Wildfire Threat Analysis Component is derived from datasets and models that represent a provincial-level assessment of approximate relative fire threats across the land base.

It is intended to provide a strategic-level analysis of many different factors that contribute to fire threats, but it is not intended to represent absolute, site-specific values. The PSTA 2015 Wildfire Threat Analysis was conducted at a small (coarse) scale, so users of this product need to confirm that the initial wildfire-risk rating assigned to a given area is accurate by having a qualified professional validate that rating at the forest stand level.

Limitations of the 2015 Wildfire Threat Analysis are related but not limited to the following factors: accuracy of the Vegetation Resources Inventory (VRI); the 17 fuel types identified collected across decades using different standards and technologies; and assumptions associated with the development of the head fire intensity and spotting impact data layers.

The Province of British Columbia makes no warranties or guarantees either express or implied as to the completeness, accuracy or correctness of the data portrayed in this product, nor accepts any liability arising from any incorrect, incomplete or misleading information contained therein.

If information, data and databases are provided "as is" with no warranty, express or implied, including but not limited to fitness for a particular purpose. By accessing the PSTA data, PDF files or any product derived from them, you hereby release the Province of British Columbia and its staff, employees and contractors from any and all responsibility and liability associated with their use.



**Clearwater Woodlot Association  
PSTA Fire Threat Rating on Crown Land within Woodlot Licences within WUI Buffers**