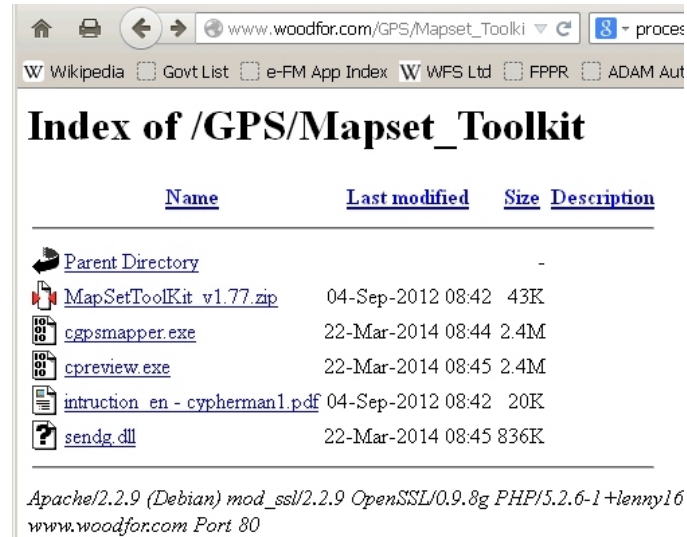
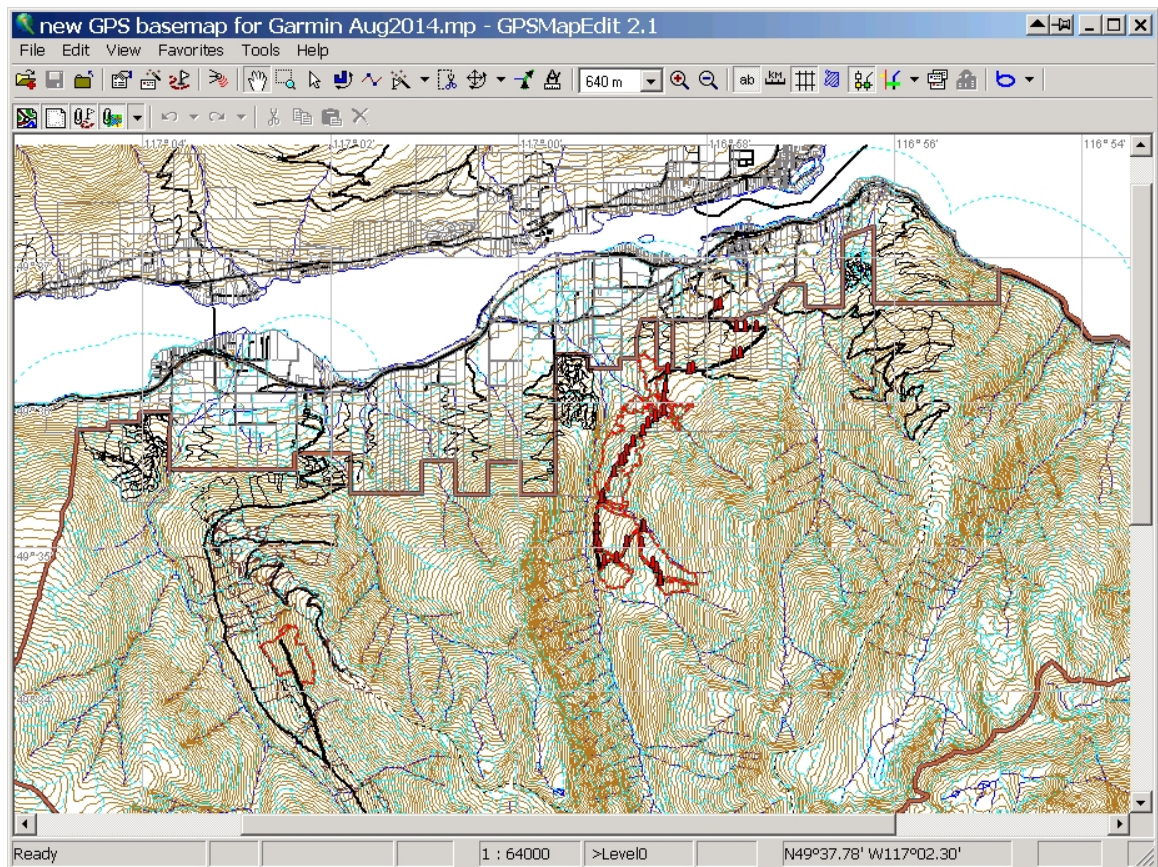


How to use Mapset Toolkit to Install Maps in Garmin MapSource

1. Download the files from http://www.woodfor.com/GPS/Mapset_Toolkit/ and dump them in a directory called Mapset_Toolkit on your computer. I put it on C:. I do not know if it matters. You will need to UnZIP the zip file, of course.



2. Create a typical Garmin map in GPSMapEdit. Make sure the Map Properties are reasonable.



Map Properties

Header | Levels | cGpsMapper | Bounds | Statistics | Source | Extras

The type set defines possible types of objects in the map and their numeric codes.

Type set: **Garmin**

Unique integer number of map.
* For Garmin maps: 8-digit, decimal (e.g. 11000204) or hex prefixed with 'I' letter (I00A7D98C).

ID: **20140420**

Displayable name of map. May contain any characters.

Name: **HP_Base_Map**

Copyright information: **HPCF**

Datum: **WGS 84**

Elevation units: **Meters**

The parameters affect storing labels in MP (or IMG etc) file.

Code page: **437 (OEM - United States)** **Detect**

Coding schema: **European (single-byte)**

☐ Left side traffic

Press the button below to get file size, date, time and other attributes.

File Properties

OK **Cancel** **Apply**

Map Properties

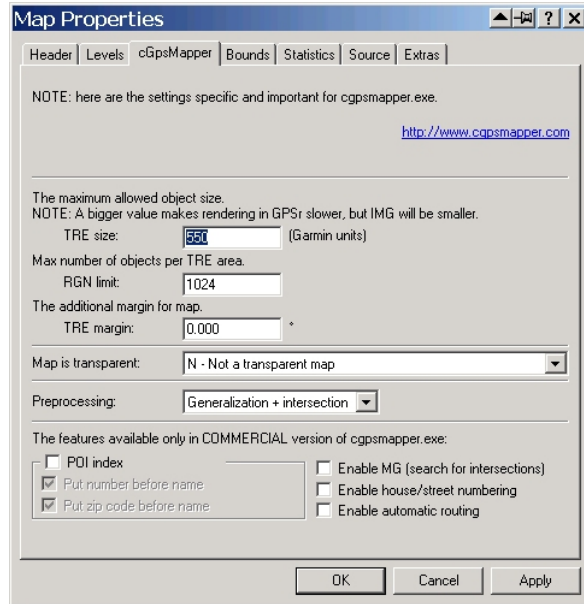
Header | Levels | cGpsMapper | Bounds | Statistics | Source | Extras

Level	Bits	Lat grid	GPS zoom	MapSource zoom
Level0=	24	2.38 m	120 m	Zoom0=0 (< 1.2 km)
Level1=	23	4.8 m	200 m - 300 m	Zoom1=1 (1.2 - 3 km)

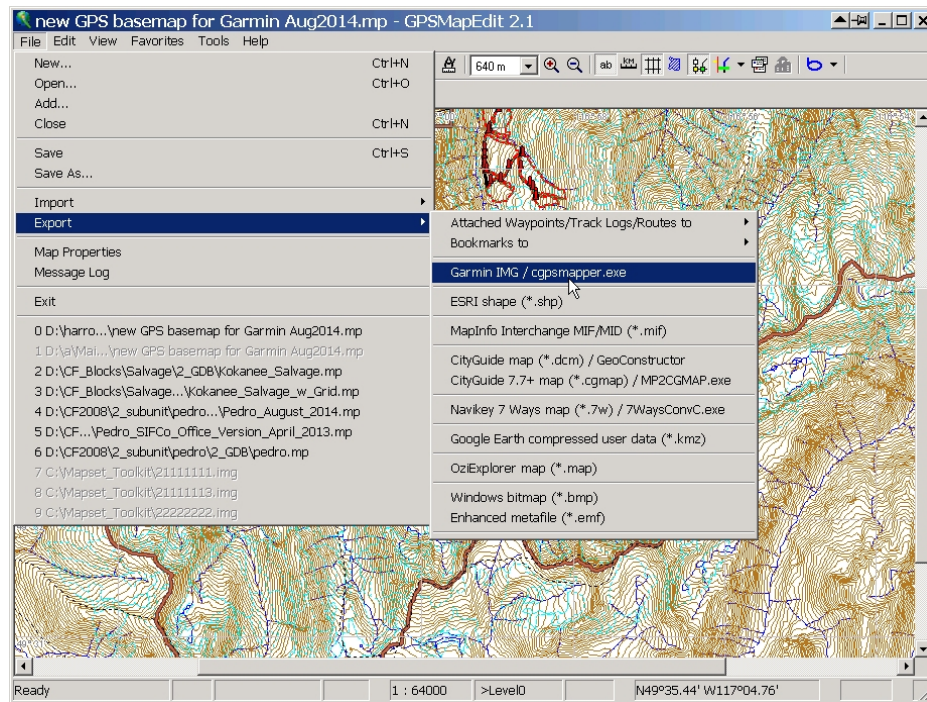
Insert Before
Remove
Change...

NOTE: The last level should be empty.
NOTE 2: MapSource zoom values for successive levels must be ascending.

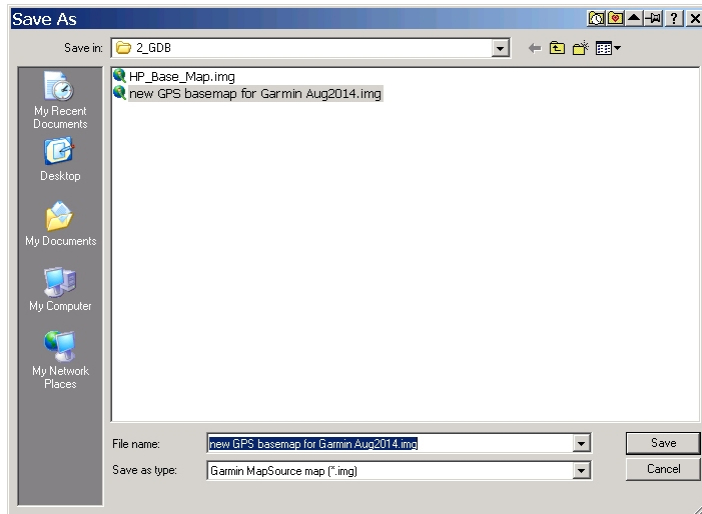
OK **Cancel** **Apply**



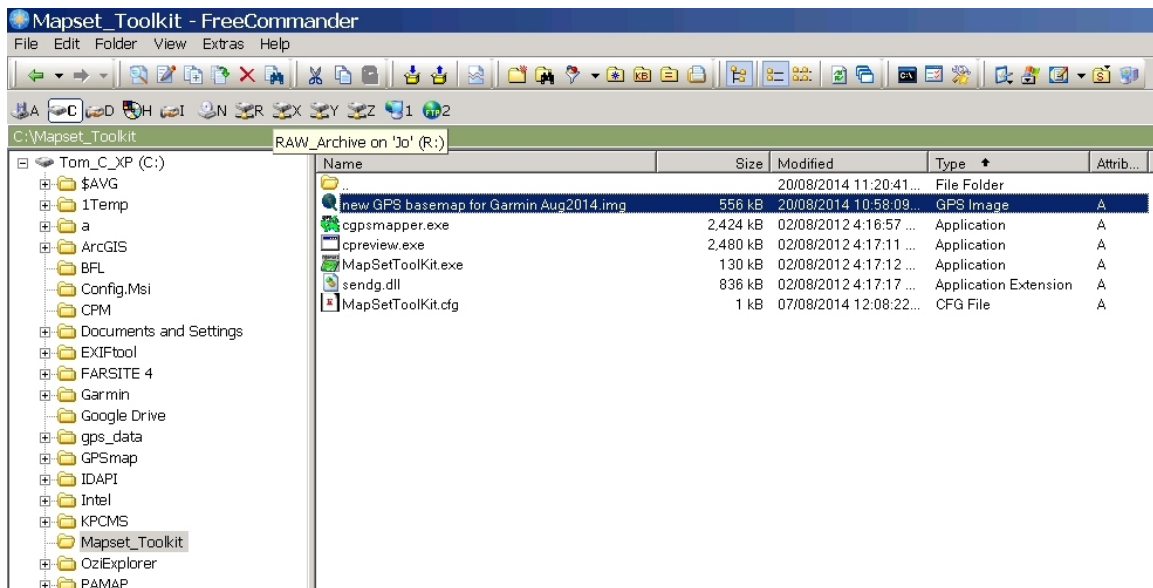
3. Export the map to IMG format per usual



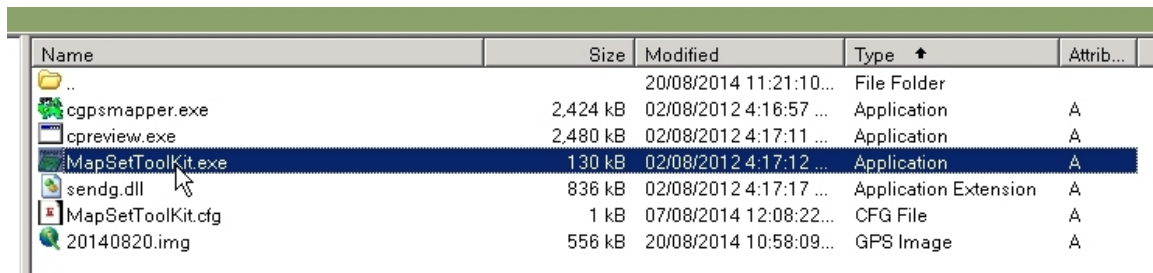
Call it anything you want.



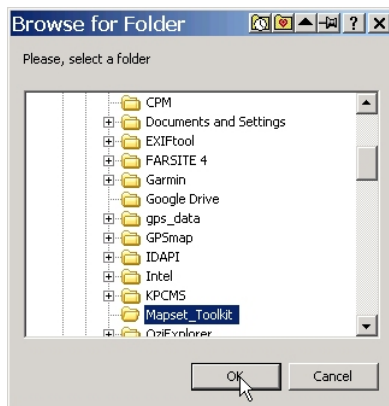
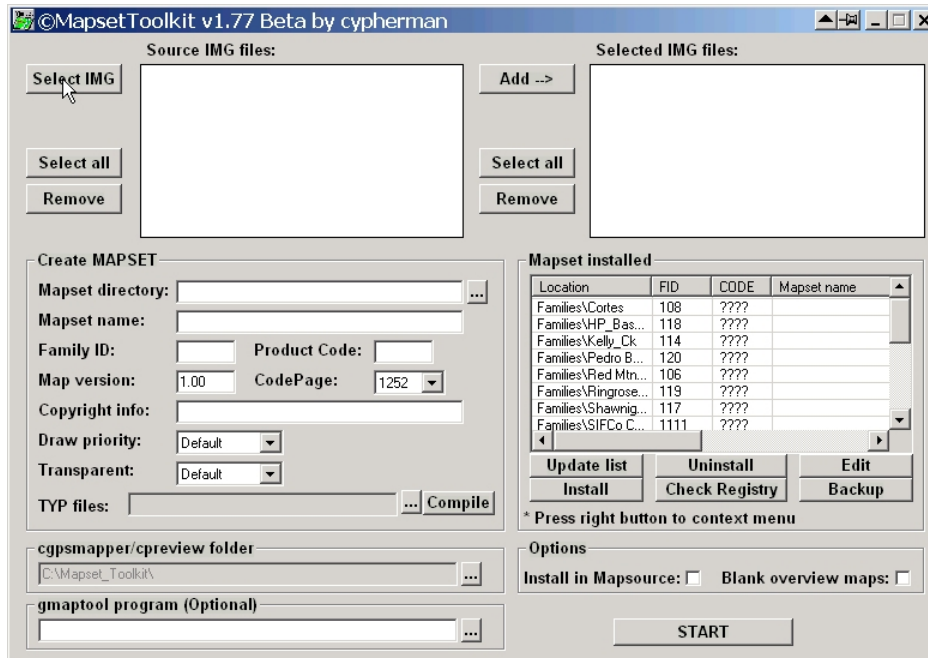
4. Copy your freshly exported IMG to C:\Mapset_Toolkit\



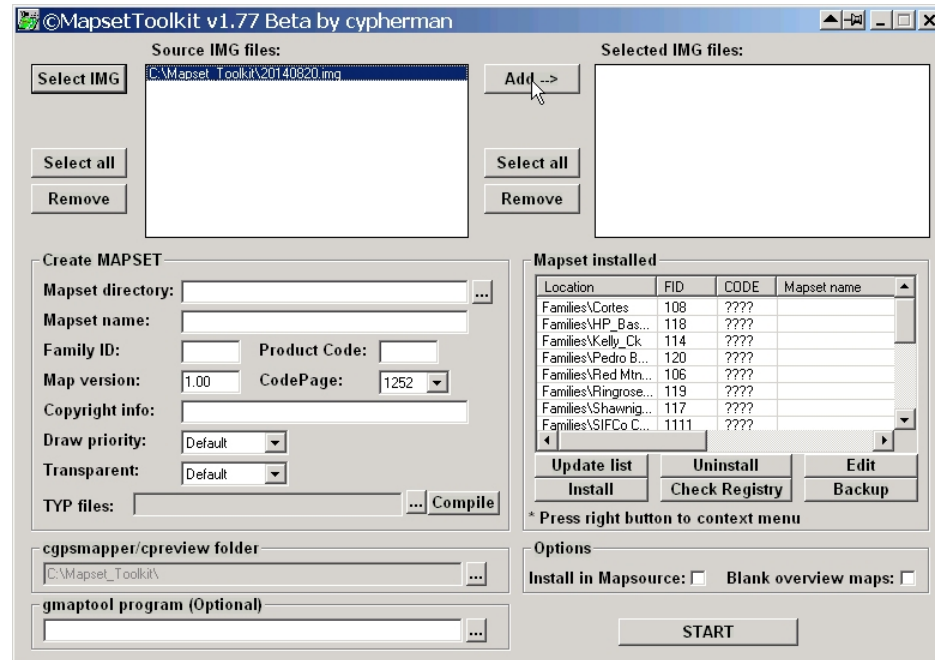
5. Rename the IMG to something with 8 numbers. I use the date: 20140820. You can use 87236219 or 12345678 or whatever. Keeping a concordance text file along the lines of 20140820 = HP Base Map Aug 2014 is a very good idea
6. Open MapSetToolKit by double clicking MapSetToolKit.exe. You can make a desktop shortcut instead, if you want.



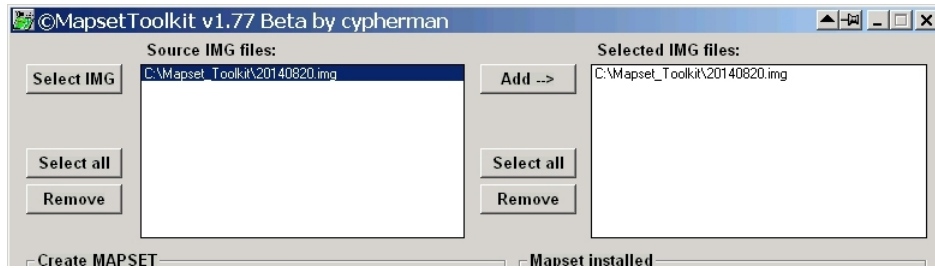
7. Tell MapSetToolKit where it can find maps - click **Select IMG**. It's first guess is C:\MapSetToolKit, which is correct because that is where we put the IMG.



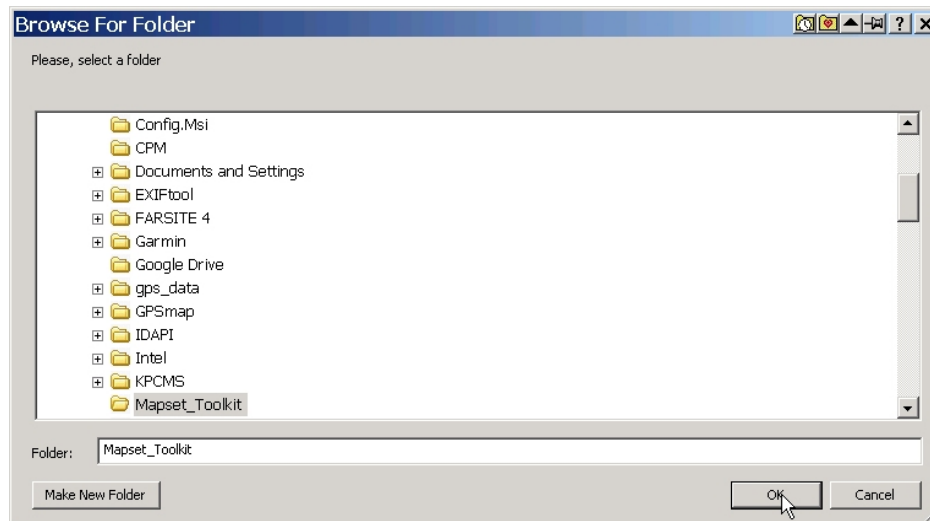
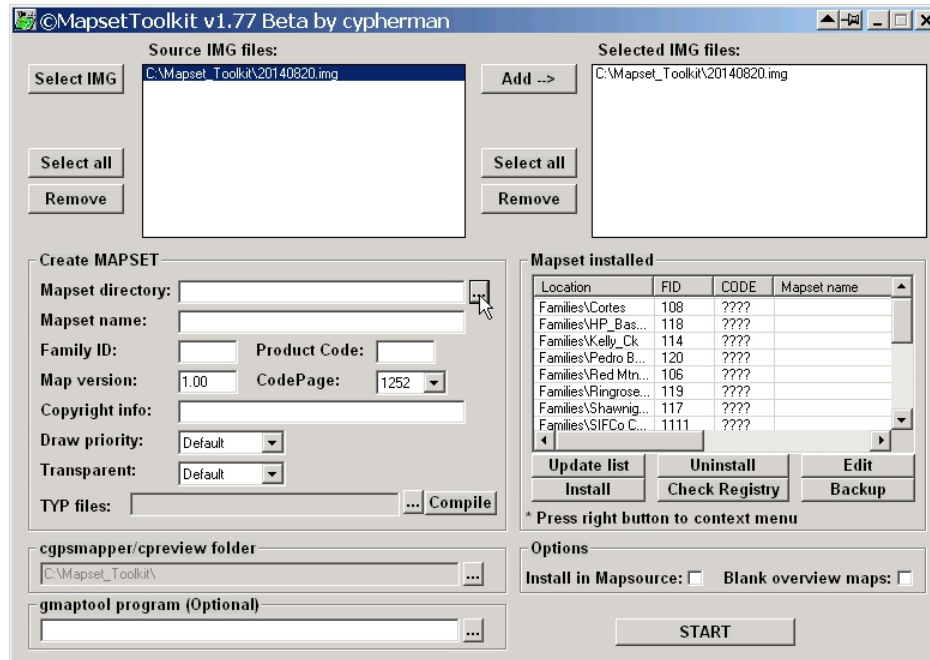
8. It finds 20140820. Tell it to Add--> it.



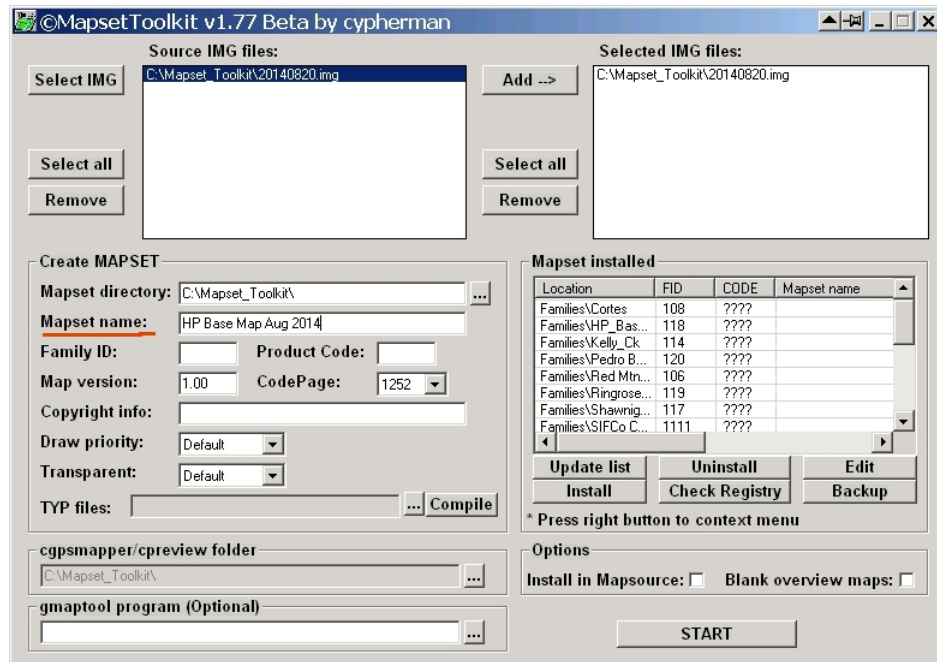
It does.



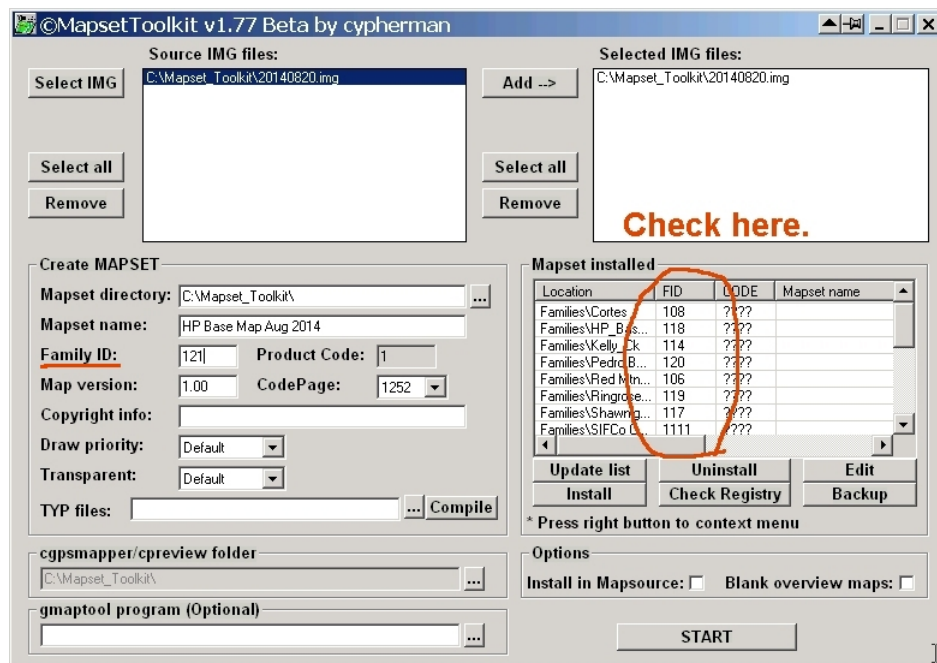
9. Tell it where the MapSetToolKit directory is. (?? You would think it would know, but it is a fab piece of free software, so do it.)



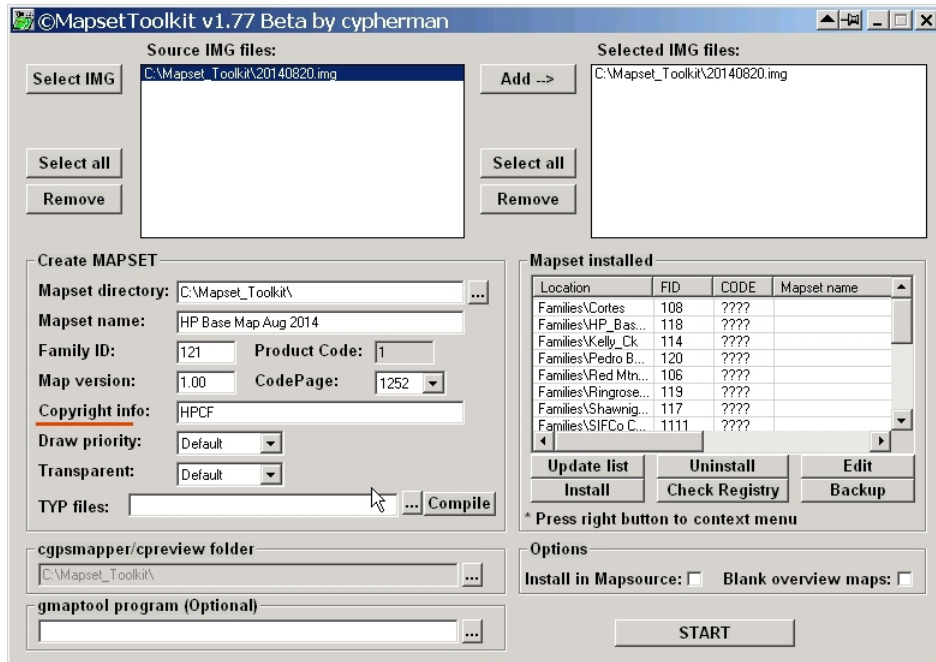
10. Type in a name for your map set.



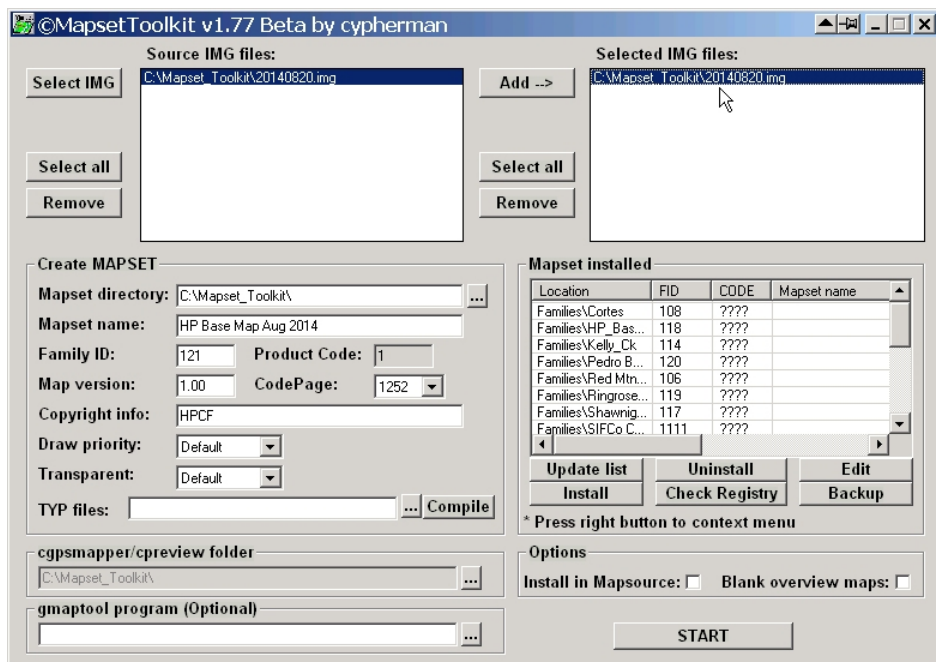
11. Family ID. Slightly more tricky if you have a stack of maps loaded in MapSource - your family ID must be unique. After research in list, I determine that 121 is available. If you make a mistake, it tells you and you can fix.



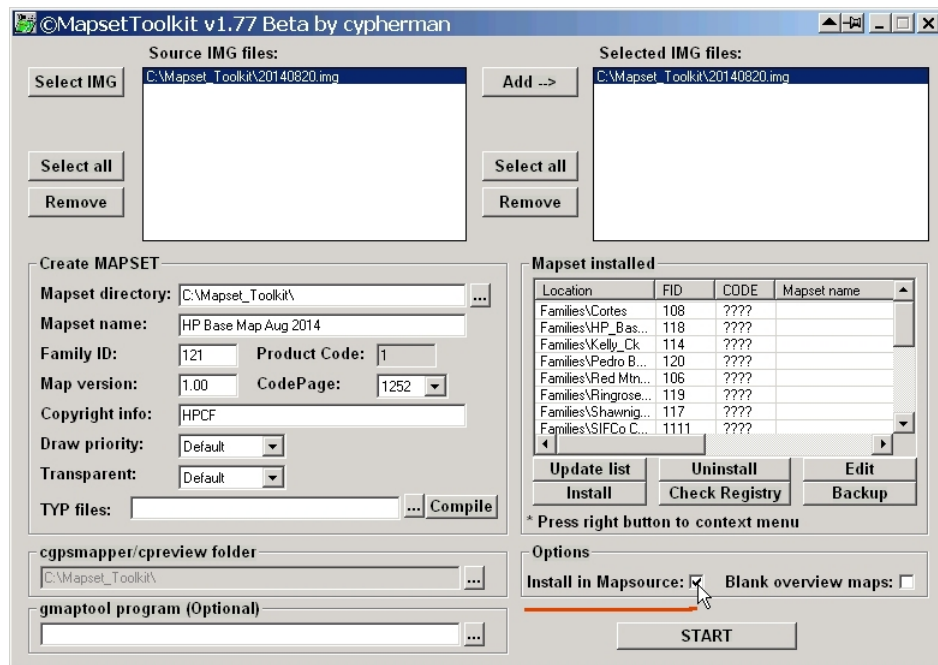
12. Copyright info:



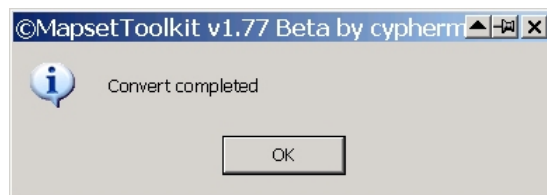
13. Select your map by clicking it in the selected IMG files Window



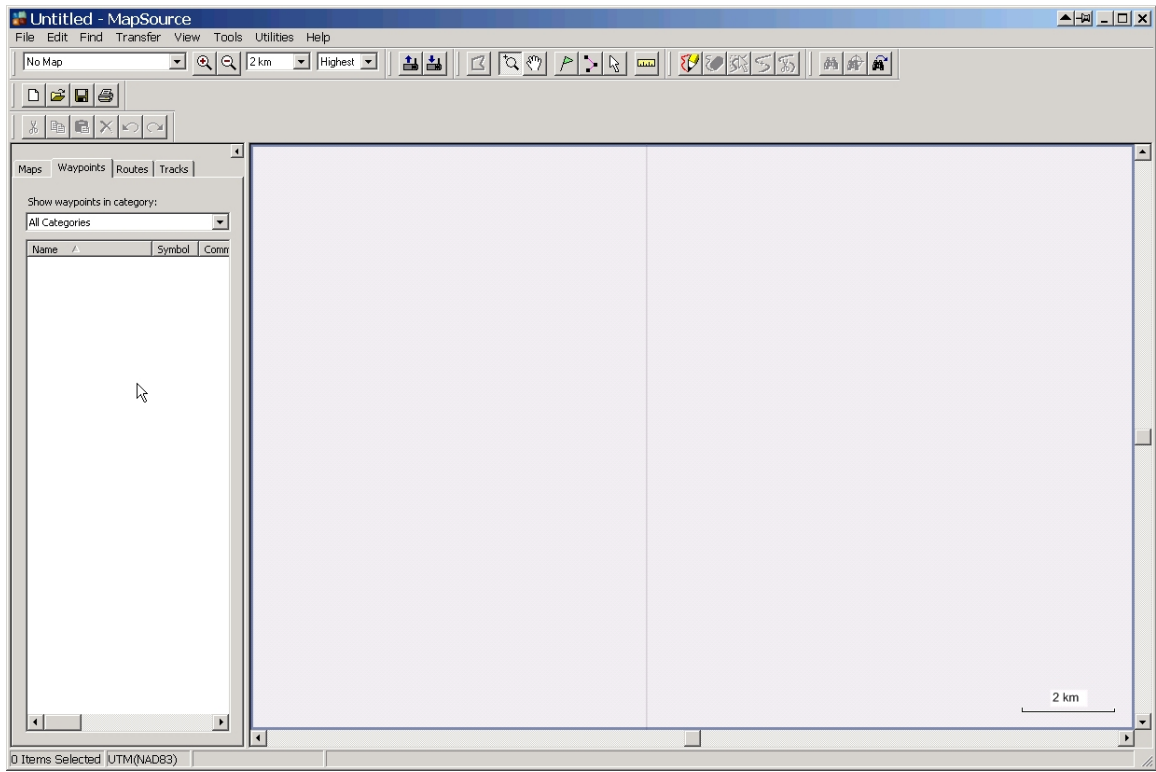
14. Tell it your goal is to Install in MapSource



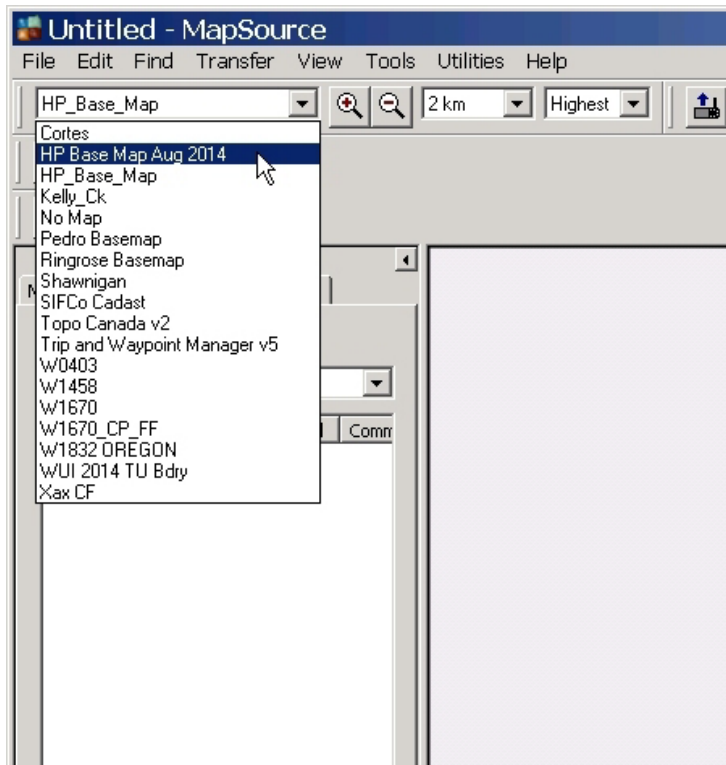
15. It does a bunch of stuff, then (we hope):



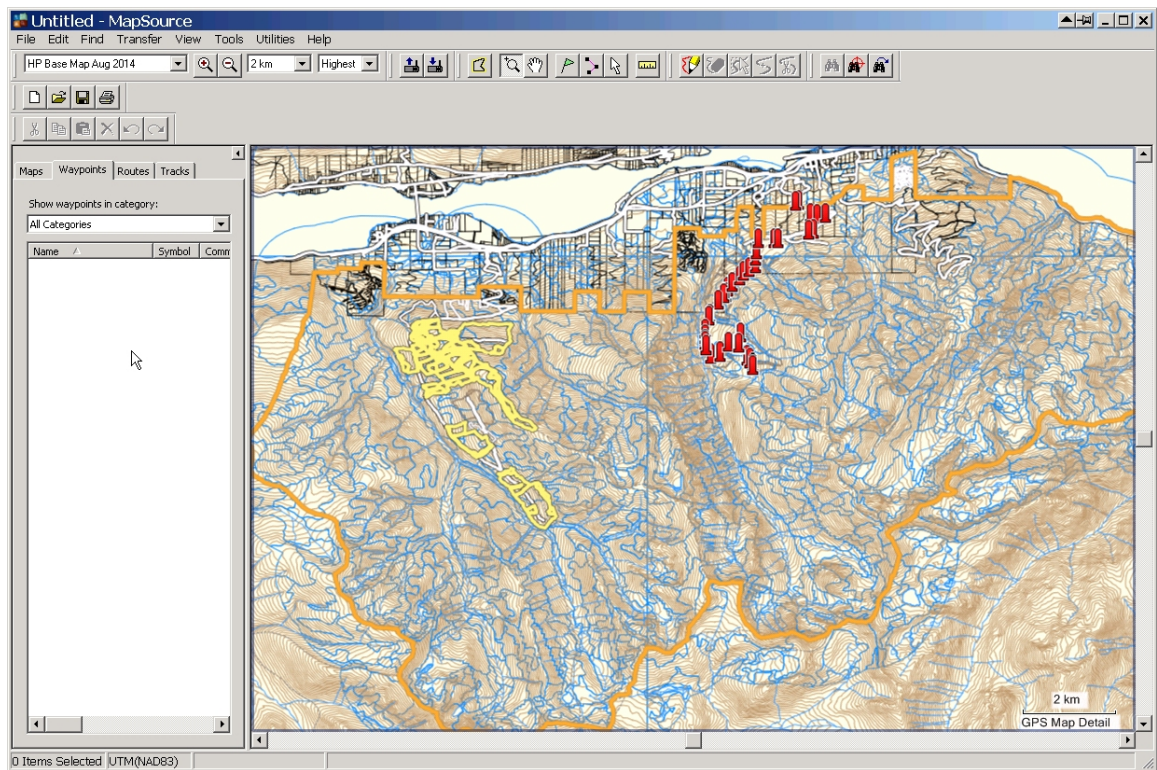
16. Open MapSource



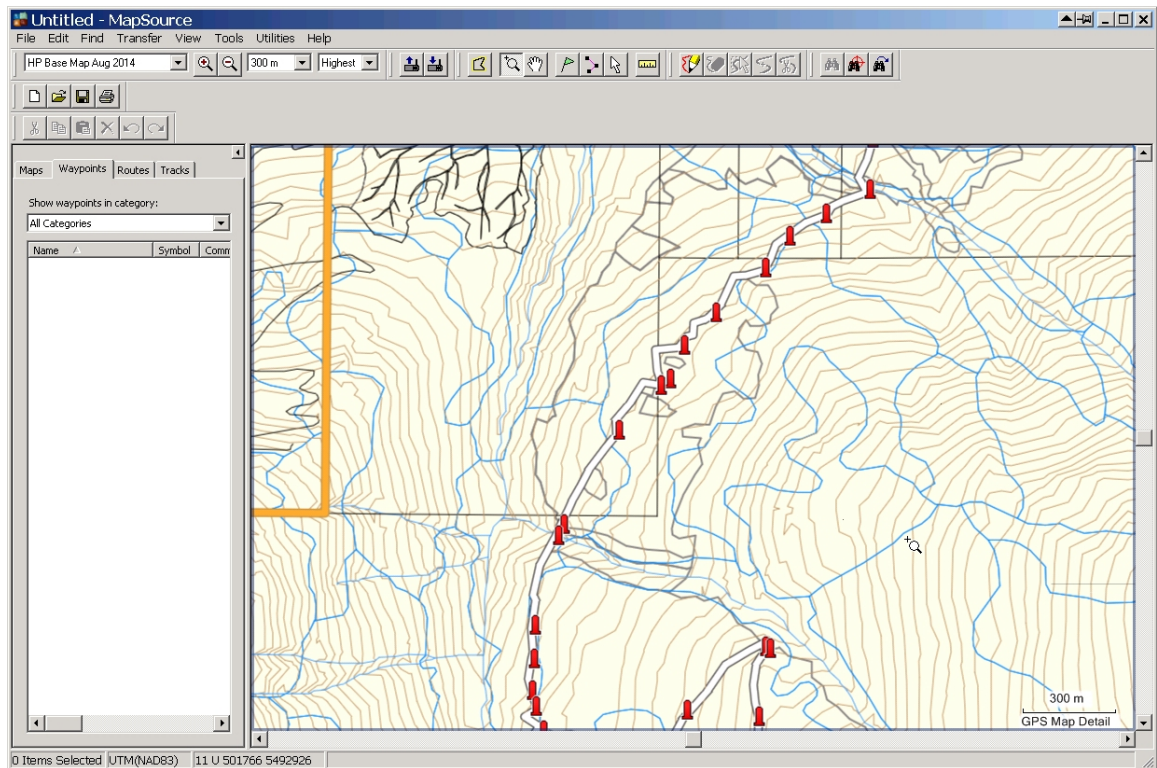
17. Add your new base map.



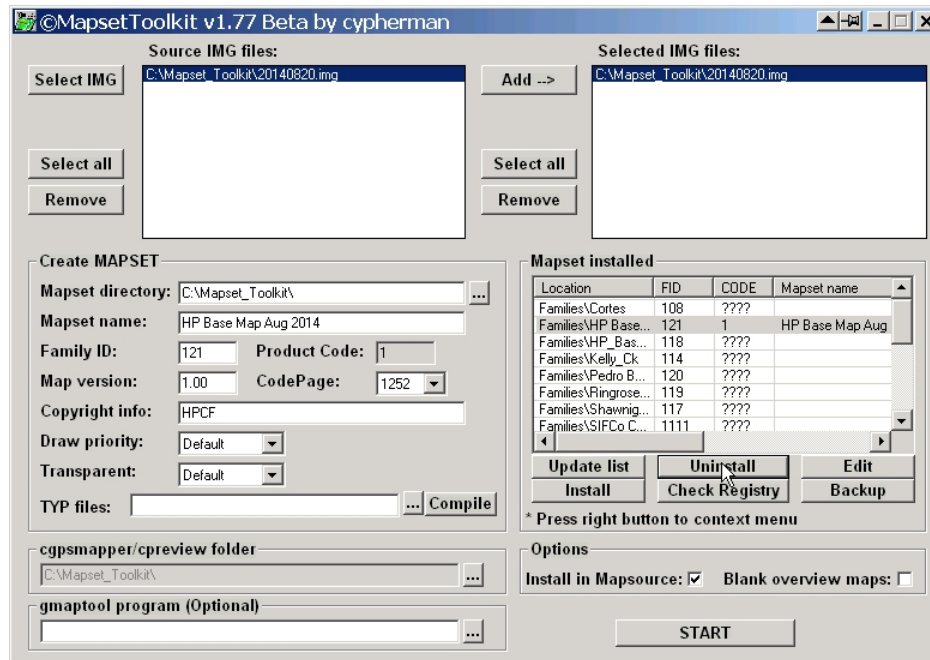
18. Yay!



19. Zoom in, looks pretty good.



20. Should something go very wrong and MapSource refuses to open and issues hostile error messages, hilite the offending map in the Mapset Installed list and then click Uninstall.



This has always fixed any problems I have created.